

Page 1

NPSMEE

11 Gilbert Street, New Plymouth

Public Running Sundays 1-4pm

Contacts

Monty - (06) 758 9866

Martin - (06) 753 5029

Ben - (06) 751 3141 or (027) 384 5651

WELCOME!

Welcome to the next edition of the SWARF newsletter! Here's something different to start, found on Facebook just the other day... Monty on his engine down at a past Convention. Neat little trailer aye! Great stuff :)



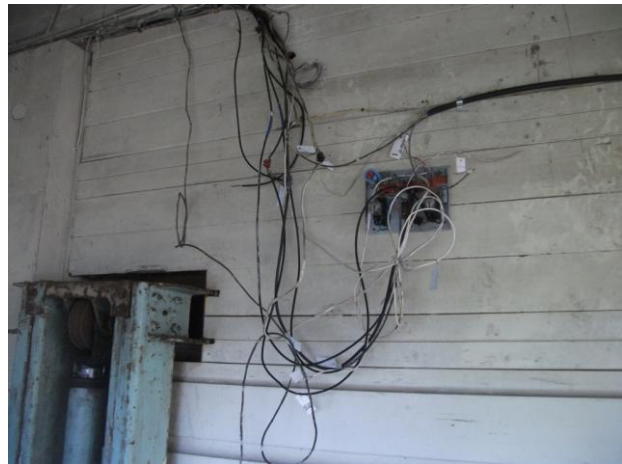
Page 2

Latest Info

Sunday running has been going rather well, with minimal loss due to weather. The Ec and Wab have been doing awesome work, moving the crowds that turn up on a Sunday afternoon. Ben's DH and Bruce's 'Mountaineer' have also been filling in some days, when their owners aren't pre-occupied!



John M is continuing to work on the Petrol-Hydraulic loco (when he's not overseas on holiday), and we hope to see this back on the track soon earning its keep.



Planning is underway for another Charity Run, to be held once the fine weather arrives again. We are currently taking suggestions for the receiving Charity/Organisation, so if you know of one that would be interested please talk to either Ben or Bruce.

Page 3

We have been trialing different types of coal, with varied results but still no certain product stands out. Thanks to a few members who have brought in a bag for us to try! The most suitable char was brought down by Greg B from the Manakau club over Labour Weekend, however it is only available in one size - too small for our locos unfortunately.



We are investigating options for a replacement sign for the footbridge. The current one is past its use-by date and is starting to look drab. Any ideas for this new sign can be forwarded to a member of committee, so get brainstorming!

We have also implemented a Warrant check-sheet for those who would like them to present with their loco at our fellow like-minded clubs. Please see Bruce for these, and our thanks to his office-lady for typing these up and printing them! These will slowly be implemented at our track as-well...



*****New Faces and Helpers Required*****

Just remember that we run EVERY fine Sunday, so feel free to come down and lend a hand. All roles are available every week, from Station Duties to Driving, so please make time to come down and help YOUR club. With a few of the regular members looking to take trips away or step-back, we are in need of some extra assistance...

WITT Engineering Workshop Visit

Wayne Reid kindly offered us the opportunity to go and have a look at some of the Engineering and Welding facilities at the WITT complex, on Thursday 28th of May. Our thanks are extended to him and those tutors who were on-hand to answer questions and demonstrate their chosen item. Yours-truly was up in Auckland getting ready for the Manukau LS Queens Birthday Open Weekend, however I am led to believe Ryan had his 'iPod' there taking photos (the wonder of technology!) so hopefully we can put some of these in the next Newsletter. Meanwhile, here's a photo showing the plaque the WITT-boys made up on the CNC Mill...



Mid Year Dinner

Our Mid-Year dinner was held at the Sunworld Restraunt again this year, and was a huge success. 17 members and their partners showed up, and from all accounts everyone enjoyed their time. Was great to catch up with some members who lead busy lives and don't turn up at the track very often, and to see the camaraderie between members. Our thanks to Ben for organising this...

*****AGM 2015*****

This years AGM was held on the 21st of May, 7:30pm at the Clubrooms. As the President and Secretary have NOT submitted their respective reports, the summary of the 2015 AGM will be out in the next newsletter. Our apologies for not including this, hopefully this will get things moving!

Bens DH - Finished (ish)

Ben's DH has been running on regular occurrences down at the track, and is certainly proving its worth - sometimes single-handedly taking the crowds on Sunday-afternoons. The Twin-Tone Air-Horns fitted are a great attraction/attention-getter, and kids love to hear them toot into the tunnels! The loco travelled away to the Manakau Live Steamers Open Weekend over Queens Birthday, and clocked-up and estimated 40kms over 2-days/nights (hauling 6-cars up the hill track on Sunday night on a greasy rail was interesting!). Unfortunately Ben's camera suffered a malfunction before the weekend (since fixed), so the below photos are taken by Heather Wilson and Corban Fray.





New Shed Door and Alterations

Tony House and Monty G have been measuring up for this door, and the obvious alterations to the current setup that need to be implemented. Martin and Bruce have already moved the relevant wiring and water-pipes ready for this installation. With any luck this will be sorted by Labour-Weekend... If you have an idea for the internal changes which will be happening once the new door is installed, please see someone at the track or draw your suggestion on the blackboard in the clubroom with your name beside it.





We have recently had 3 trees removed. The big one down in the members car-park has disappeared, boy you should have seen the trunk - 6ft-plus in diameter! Also 2 trees near the track entering the station have been downed, and there is plenty of firewood there!

Also, please be weary of the member's car-park as there have been builders etc down there who seem to have a habit of dropping nails/screws on the ground. 2 people (that we know of) have already had these little beggas implant themselves in 2 tires, so it could be a good idea to scout it out first to make sure the area is clear before parking up. Don't need anymore flatties!

Kerrin Galvin's Article

Kerrin Galvin has kindly submitted an article on a Rotary Table Conversion for his CNC Mill (?). This file can be downloaded from our website, or printed out via Ben. If you need a printed version just ask! We were hoping to make it via several installments, but at the rate this newsletter appears at, it would take about 1-year!

Well, that's all for now. We hope you have enjoyed this newsletter. Please send any feedback/comments/suggestions to

sewellben3@gmail.com

Until Next Time

New Plymouth Society of Model & Experimental Engineers