



SWARF



**The Newsletter of the New Plymouth Society of Model and
Experimental Engineers (NPSMEE)**



MAY 2016

Committee

President:	Bruce Jamieson	
Treasurer/Sec:	Monty George	06 758 9866
Committee:	Peter George	
	Lester Watchorn	027 426 7060
	Tony House	
	Wayne Reid	
	Ian Hayton	
Newsletter & Website:	Lester Watchorn	Send to: npsmee@gmail.com

www.npsmee.tripod.com

www.facebook.com/eemspn/

Cover Photo:

Our club Hydraulic loco with its fresh paint work.

Editors Report

This is the first club newsletter for the year. The club hydraulic locomotive is back and looking smart in its new coat of paint. I have been away with work and haven't had a chance to drive it in its new colours, but I understand it is running nicely and not so noisy now. The AGM was held in May, with only the financial report to be presented on the 17th of June at the cub rooms; everyone should have received a note from Monty requesting your attendance.

I hope to be able to keep the newsletters quite regular. If you have any photos, interesting articles that you would like to share in the newsletter, please send it in to the email address or give me a copy. The newsletter will be uploaded to the website, but if you would like it emailed to you each time it is published, please send me your email address.

Till next time,

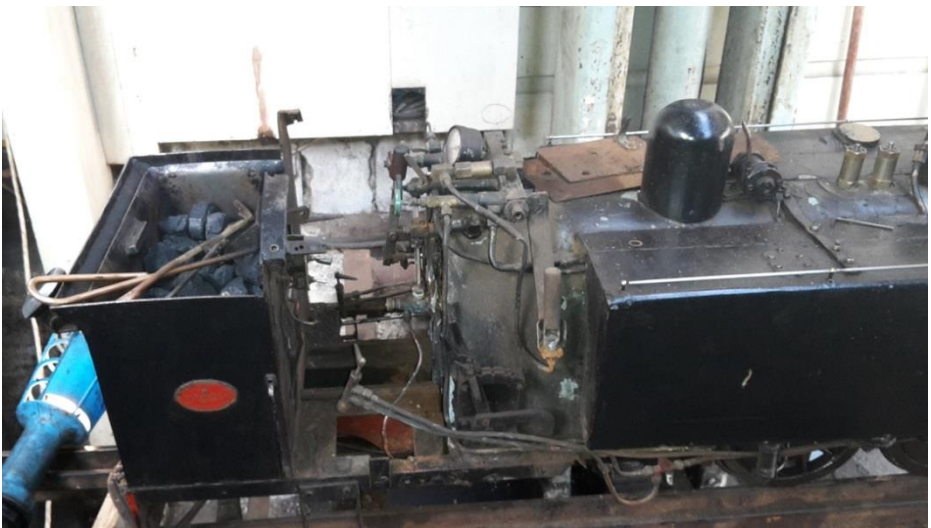
Lester

Presidents Report

Our Wab. The poor old Wab well it gets used most weekends apart from the last 7 months while Bruce has had his ongoing leg operations.

Now that the hydraulic is up and running which gives us the EC and hydraulic to run we looked hard at some maintenance which it rightly deserves. The object was to do a slight tidy up without doing a major strip down and make over.

John and Martin got keen and looked at the rear bogie unit and found axle blocks tilting in the sliders and the wheels with some real crazy wear patterns. So out it came and John went to work on new wheels etc etc.





AGM

AGM, Our AGM was well represented with not a lot of changes.

We had a slight hic up as Robbie pointed out that we never had a financial statement from the combined trust for the club rooms.

Our AGM was then amended to wait till a report was received which seems to happen the odd year when you rely on people outside of our club. Below is our chairman's report.

Quiz Picture: What project is this photo from? (answer next time)



NPSMEE
Chairman AGM Report
2015-2016

It is again with much pleasure that I present this 2015-2016 Chairman's report. Firstly I would like to thank the many members who stepped in while I was laid up with my leg. This year seemed to be rather busier than normal and we have achieved a great deal.

Building extension for the Loco's,
Roof clear lite, sauna tidy up.
Loco storage rails changed
F40ph Build
Wiring and lights,
Trolley wheels,
Down Syndrome - Gala day.
Christmas runs and Labour weekend run.

This year's barbeque was changed to a Pizza fiest which was far less organizing and went well. Was nice to see Ben who came up for a free meal and we wish him well for his job in Christchurch. Lester and Nic are new arrivals with Lester going to oversee the Club web site. Thanks to Robby for his work in the Sauna Shed. A shed that can get forgotten about.

So to the faithful few who keep this Club going a great big Thank you.

Just to keep you up to date with my leg. Well again I'm off for surgery. This time it's Hamilton. I will be out of action again and could be up there for two weeks.

Chairman

Bruce Jamieson.

Upcoming Events.

Every Sunday 2-4PM	Track running
Every Thursday 7:30PM	Club night
17 th June 7:30PM	Club night (everyone to attend)
24 th -26 th October	Labour weekend event.

Private group bookings of the railway are available from Spring – Autumn, contact: Monty (06 758 9866) or Martin (06 753 5029).

Buy, Sell, Exchange

Wanted:

- Any 5" steamers out there looking for a good home.
- 5" ride trolleys any spare ones

Contact Bruce Jamieson