

Page 1

NPSMEE

11 Gilbert Street, New Plymouth

Public Running Sundays 1-4pm

Contacts

Monty - (06) 758 9866

Martin - (06) 753 5029

Ben - (06) 751 3141 or (027) 384 5651

WELCOME!

Welcome to the next edition of the SWARF newsletter, amazingly coming out just 3-months after our last one. WHATS HAPPENED! Anyway, some cool stuff to see, so let's get into it...



Latest Info

Sunday running has been continuing, with no lost Sundays to date this year! Winter must be late, but I won't say too much on that as Murphy's Law will bring rain once I do! The Wab has had a few problems ironed out over the last 2-months, with the improvements being slight but effective.

Thanks to the people who worked on this, your efforts are much

Page 2

appreciated! The Ec has had a stint while the Wab was out-of-service, and seems to be running fine.



The new club loco is OUTSTANDING! John has finished a bulk of the work, with Martin and Mike set to sort the wiring in the next few weeks. Just don't disturb Johns handy-work guys! The attention to detail on this loco is absolutely incredible, with great attention being paid to the little things (control levers etc). The chassis has been sand-blasted and primed, and the body work is slowly advancing. The prototype model has been changed to an American design, with the Dsc proving too small in regards to internal space. There are alot of components in this beast!



Ben has added the final touches to his new loco 'Dasher', with the help of the 'Manakau Live Steamers Young Guns' (and Mike). Not to mention the help of Grant Alexander in applying acouple of stickers to finish. The

Page 3

suspension has been changed slightly, and there is just one teething issue to sort in that area before being completed. Good things take time!



Labour Weekend is coming up (just 4-months away now!) so you better start making plans for travel and accommodation in readiness for yet another fantastic event! Also in the future we have a club dinner and a Charity Night Run, which will be featured later on.

Welcome to new members Michael and Tony. Mike has already made his mark on the club, assisting Bruce in the Operation and Maintenance of the Wab, and helping on the few issues that arise with the track. Not to mention helping Ben with his new loco, and assisting in all areas of our running. He has attained his Petrol/Electric license, with Steam a little further down-the-track... Welcome to the club guys!

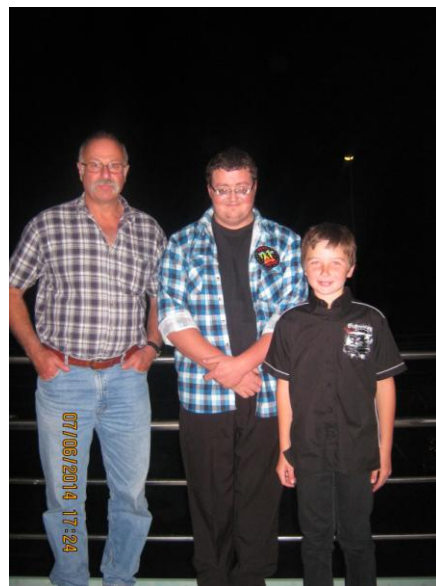
There have been a couple of issues fixed on the track-side of things. The most notable was the last curve before the station (the one that had the reverse-camber) which has now been fixed, and is riding nicely thanks to the efforts of our devoted track-gang...

Page 4

There are some alterations planned with the Engine Shed, mainly to accommodate additional locos and prepare for our new Club loco. The basic information is that the roller-door will be replaced with a new one, giving us additional height. There is also plans to severely alter the 'stack' on the RH side of the shed to allow larger locos to be stored in this which will eliminate the need for Ben and other people to reduce the height of their locos in-order to fit them in. Also included in the new design is a centre-track to line-up with the Traverser when it's locked into place in-line with the turntable. This will eliminate the need to move the mainstay loco/ridecars sideways to get out on the track, more than driving them straight out onto the turntable, thus making for easier starts to the day...

*****MID-YEAR CLUB DINNER*****

The NPSMEE wishes to advise its members that there will a Mid-Year Dinner! This will be held at the Sunworld Chinese Restraunt, on Saturday 19th July at 6:30pm. It will be Pay-For-Your-Own. Please confirm numbers to Ben Sewell (email sewellben3@gmail.com, or phone/text 0273845651) by Wednesday 16th July. Come and have abit of fun, just like Bruce and Ryan did at Ben's 21st!



Page 5

New Members

We are always on the look-out for keen people to come and enjoy this great hobby of ours. Please keep an eye/ear out for anyone you think might be keen on coming and helping out on our Sunday-afternoon running, and let them know where we are and who to contact (details on the 1st page).

We have the perfect loco to learn on, and the perfect teacher!



Charity Night Run

We would like to announce our inaugural Charity Night Run. The date is still to be confirmed, but it will tie in with the Lights festival in December/January. The charity is still to be confirmed, but at this point it'll be for the Down-Syndrome people. Confirmed dates will be in the next newsletter, but at this stage we are looking at a Saturday after the Night Runs have finished... The below is a taster, from Ben's camera at the Hamilton Model Engineers Night Run, held in late-September 2013.



NPSMEE AGM 2014

The AGM was held in May, and resulted in some interesting discussion and 2 new members (as mentioned before). The Chairman's Report from Bruce was read out, and goes as follows:

It is with much pleasure that I present the 2013-2014 Chairman's report. Once again another successful year. Thank you again to all the faithful few, who diligently come every Sunday and assist to keep everything running.

From the gardens to the food prep on Labour Weekend we thank you Ladies. Maintenance of Track, Trains and other odd bits, thank you guys.

With the acquisition of a leaf-vac, boy has it made life easy! Especially round the hoist and steaming bay area...

Labour Weekend, again well represented and a good time by all.

Our Christmas Festival Night Runs again went well and thanks for the helpers from the lights in the trees to managing the station.

New Loco is well under way. Thank you John for overseeing this and completing most of the build. Quality and workmanship shown in this is superb!

Thank you again to everyone who assisted our great club through this year.

Chairman

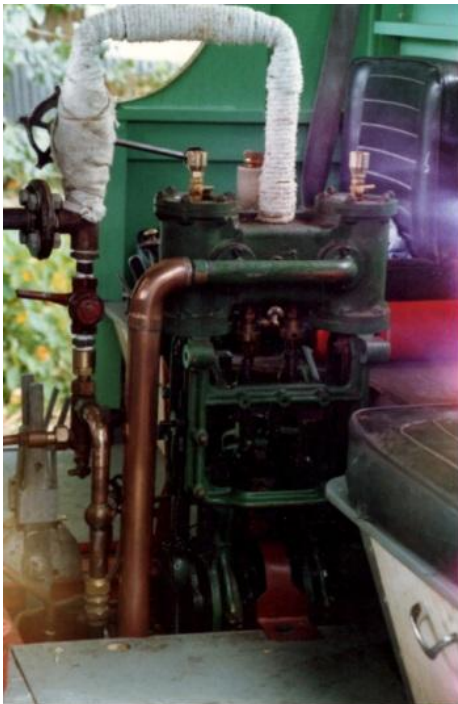
Bruce Jamieson.

The AGM's Election of Officers stayed the same as 2013/2014.

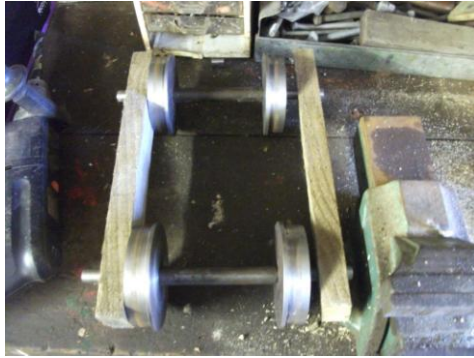
The NPSMEE's Steam Truck

Yep, we used to have one! Details are sketchy, but the following photos were taken in the late-80's. It is powered by a Stanley engine, the steam for which came from an LPG-fired boiler. The Steam Truck also features steps to enable the cartage of people, and attended many Parades and Galas.

As well as these, it was used to give people rides around the block on a Sunday afternoon. Obviously a great crowd-pleaser!. It was later sold (due to increasing boiler-inspection costs) to a guy in the Hutt Valley. It was later moved to the Tawhiti Museum, where it can be seen upon request (it is occasionally left on display).



Page 8



Above is some General Photos. 2 wheelsets for Ben's new project - a DH shunting locomotive in 5" gauge, The President on the Wab with a Full Load, The Sun through the Trees at Teds, and Mike heads up the hill at Teds on Ben's Loco 'Dasher'.

Well, that's all for now. We hope you have enjoyed this newsletter. Please send any feedback/comments/suggestions to

sewellben3@gmail.com

Until Next Time

New Plymouth Society of Model & Experimental Engineers